

A detailed illustration of a tropical jungle. In the upper left, a toucan with a large, colorful beak flies. To its right, a macaw with vibrant red, blue, and yellow feathers is in flight. The foreground is filled with dense foliage, including large green leaves, pink flowers, and clusters of red berries. Two butterflies with black and white patterns are perched on a leaf. In the lower right, a hummingbird is seen near a pink flower. The background shows a misty, hazy view of more tropical trees and hills.

Luxury of Nature

# GARDENS OF EDEN

Bang Tao Beachfront  
Residences



## Gardens of Eden

Gardens of Eden is a unique luxury and wellness destination comprising residences and facilities spanning over 122 000 m<sup>2</sup> of rich natural landscape, 70% of which is dedicated to beautiful parks, lakes and gardens.

## Location

Gardens of Eden is valued for its location – just 50 meters from the prestigious Bang Tao Beach in Phuket, and a 5 minutes' walk from Laguna Phuket.





Gardens of Eden  
is located across the best  
beach in Bang Tao



30 minutes by car from Phuket International Airport



5 minutes by car to the Boat Avenue and Porto de Phuket with top supermarkets, shops and restaurants



15 minutes to Blue Tree Kids Water and Activity Park



20 minutes by car from British International School



30 minutes to Central Floresta Shopping Mall



5 minutes to Bangkok Hospital (Clinic Bang Tao)



PHUKET



# Gardens of Eden Master plan

PLOT SIZE 122 000 M<sup>2</sup>





# EDEN RESIDENCES

1<sup>ST</sup> PHASE

# GARDENS OF EDEN

- 1<sup>ST</sup> PHASE: EDEN RESIDENCES
- 2<sup>ND</sup> PHASE: PARK RESIDENCES
- 3<sup>RD</sup> PHASE: LAKE RESIDENCES
- RESIDENCES BUILDINGS



## Facilities

– Medical wellness center (approximately 5000 m<sup>2</sup>) by GOCO including Spa, Gym and mind and body studios, vitality pool, yoga sala, meditation gardens and organic farm, outdoor running and trim trail, community park

– Kids world including two storey kids club with indoor and outdoor adventure playgrounds, trampoline, Lego zone, donut slide, sand garden, kids pool with small aqua-park, little café and lounge zone

– Club house with restaurant, located near blue lagoon – a pool with white sand and lounge zone with sunbeds for relaxing time

– Club house located at the biggest pool and lake with restaurant, pool deck with sunbeds, changing rooms, turf area



## Facilities

- Park with outdoor walking and running trail, relaxing areas, exotic waterfalls, gardens with more than 100 species of blooming bushes and flowers
- 5 restaurants, sky bar
- Business center with grocery store at the 1st level
- Underground parking with electric chargers under each building
- A gated and security territory free of vehicle





52,000 m<sup>2</sup>

of parks and gardens

8,000 m<sup>2</sup>

of lakes and ponds

11,000 m<sup>2</sup>

of swimming pools

Underground parking  
Safe vehicle free territory  
Gated and secured perimeter



**GOCO**  
HOSPITALITY

GOCO Hospitality, the winner of Best Spa Development Group is in charge of Wellness and 5\* hotel components in Gardens of Eden



The company behind the world's largest & most respected wellness destinations

SHA WELLNESS CLINIC,  
SPAIN



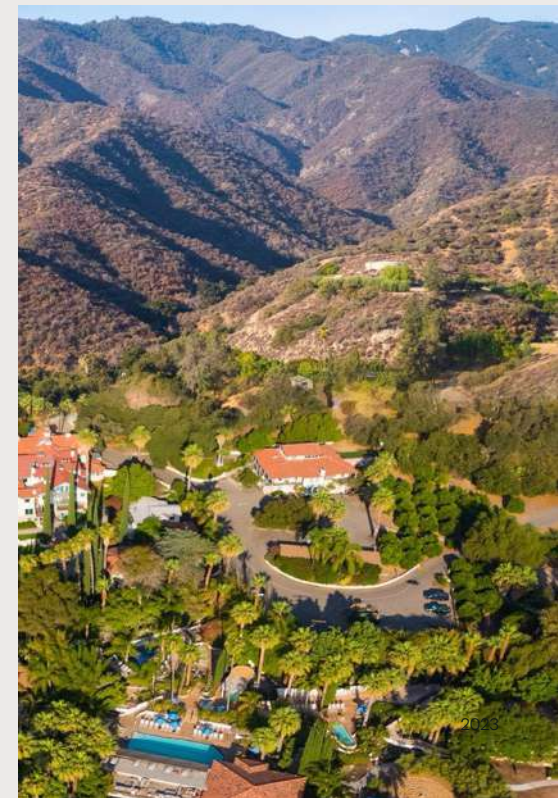
SHANGHA BY OCTAVE,  
SUZHOU, CHINA



AMAALA,  
SAUDI ARABIA



GLEN IVY HOT SPRINGS,  
UNITED STATES



# EDEN RESIDENCES

FIRST PHASE OF CONSTRUCTION



141 private  
residences

Ceilings more  
than 3 m high

Private pools

Sea view terraces

Inner gardens

## Eden Residences

Beachfront 141 residences, located 50 m from Bang Tao Beach with breathtaking seaviews and inner park territory. Exclusive facilities and hospitality services.





# EDEN RESIDENCES



## Project Details

Two 3-storeys and five 4-storeys residential buildings

141 residences

More than 3 m height ceilings in all residences

## Residences types

1 bedroom 72-75 m<sup>2</sup>

2 bedroom 105 - 112 m<sup>2</sup>

3 bedroom 179 - 219 m<sup>2</sup>

Two storey 3 bedroom 190 m<sup>2</sup>

Two storey 2 bedroom penthouses 257-282 m<sup>2</sup>

Two storey 3 bedroom penthouses 283 - 452 m<sup>2</sup>

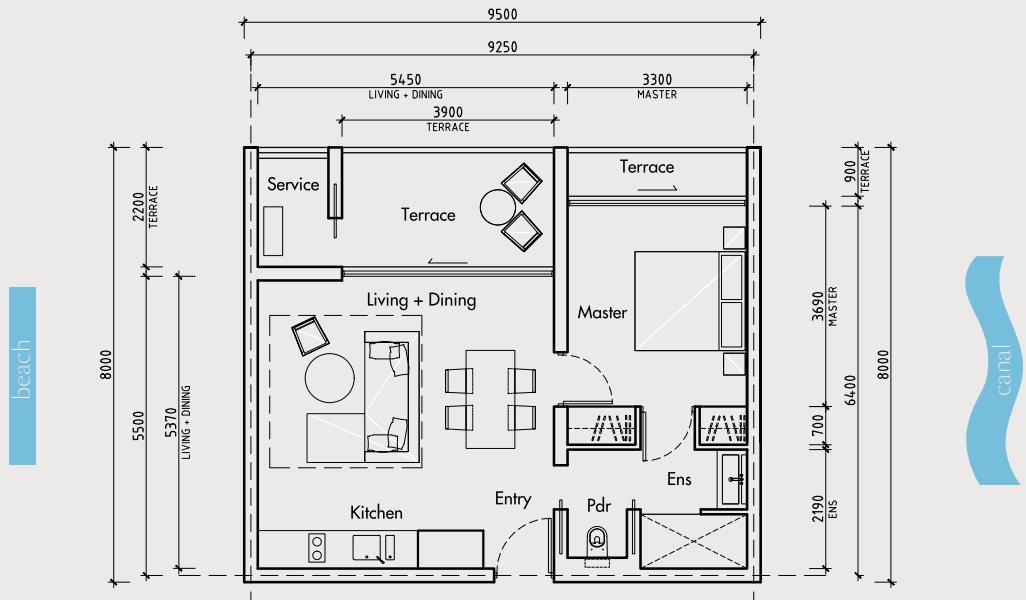
Two storey 4 bedroom penthouses 371-426 m<sup>2</sup>





# TYPICAL UNIT

## 1 BEDROOM (1B\_TYPE 1)

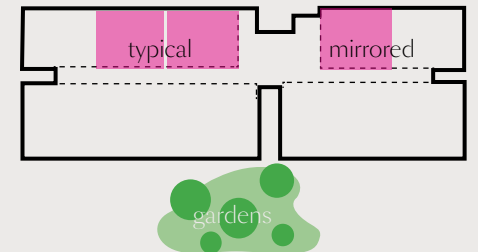


UNIT AREA:

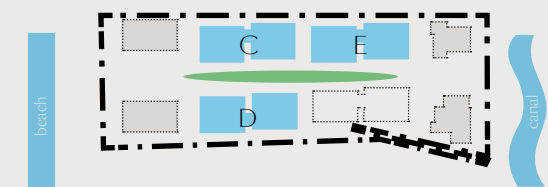
INTERNAL	58.5sqm
EXTERNAL	13.5sqm
TOTAL	72sqm



TYPICAL PLAN  
Scale 1:100 @ A3



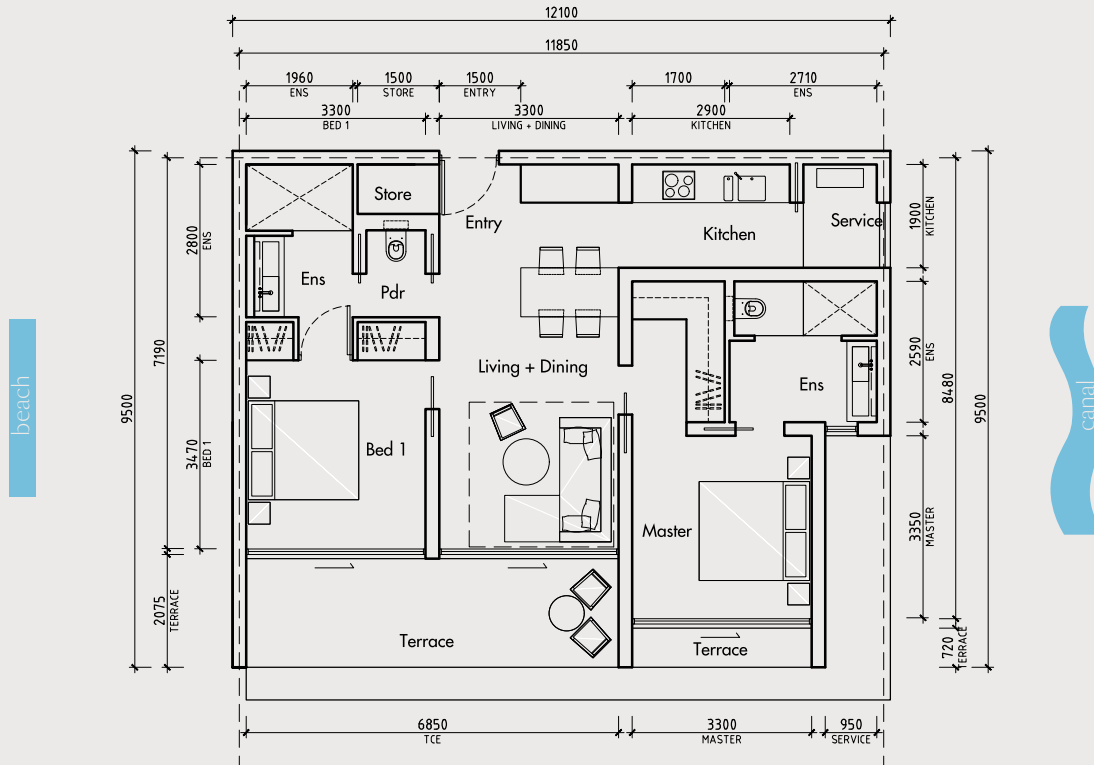
UNIT KEY - CONDOMINIUM\_ C,D,E (LEVELS 1-3)



PRECINCT KEY

# TYPICAL UNIT

## 2 BEDROOM (2B\_TYPE 1)

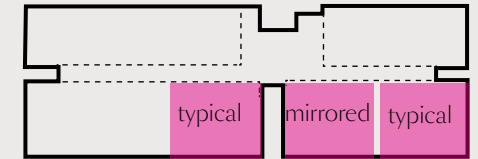


UNIT AREA:

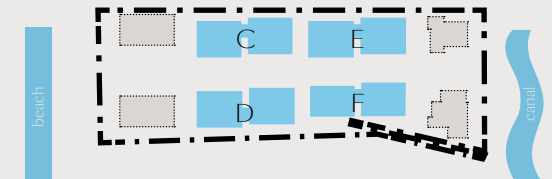
INTERNAL	86sqm
EXTERNAL	19sqm
TOTAL	105sqm



 TYPICAL PLAN  
Scale 1:100 @ A3



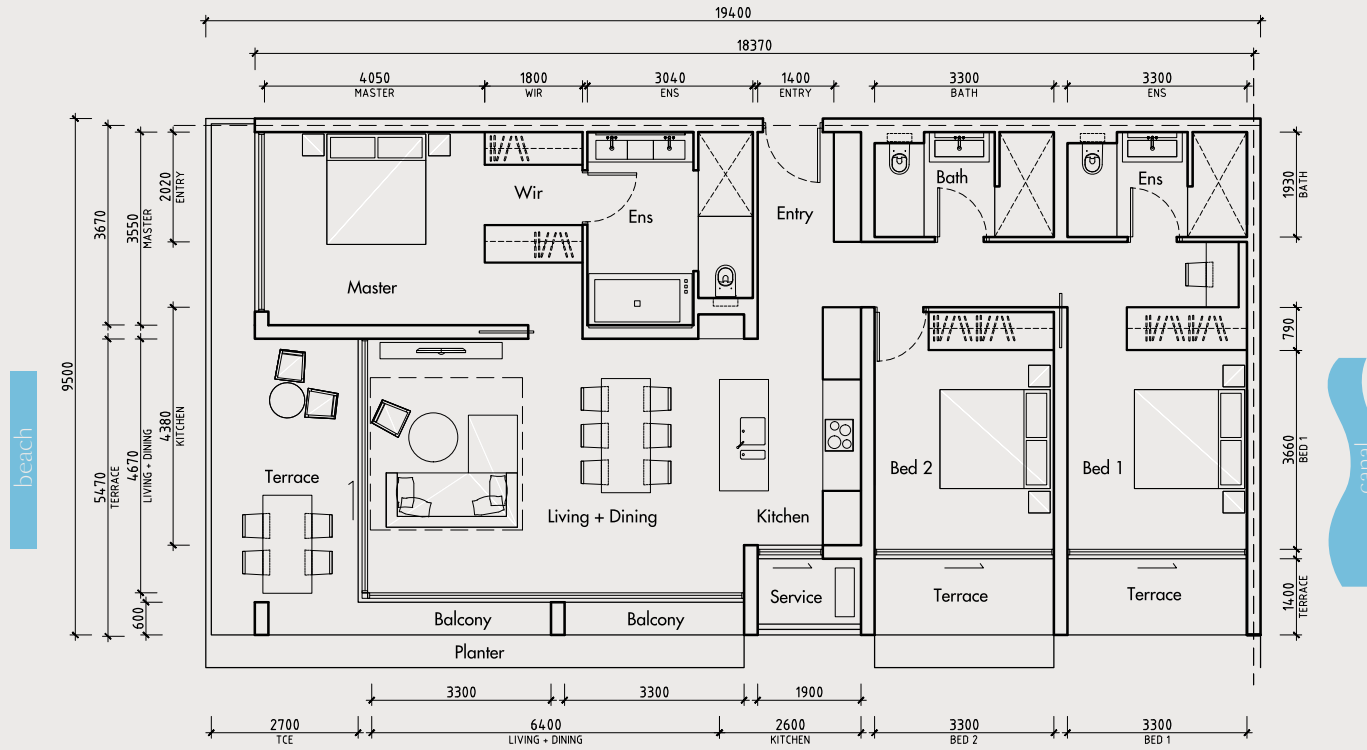
UNIT KEY - CONDOMINIUM\_C,D,E,  
F  
(LEVELS 1,2,3)



PRECINCT KEY

# TYPICAL UNIT

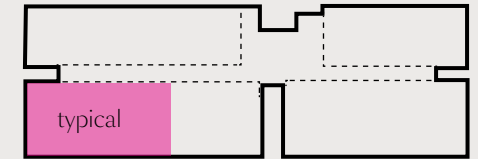
## 3 BEDROOM (3B\_TYPE 3)



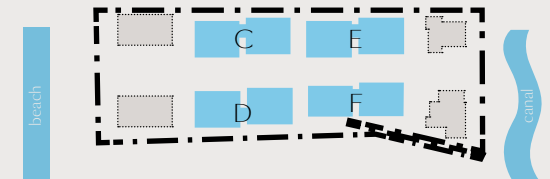
UNIT AREA:

INTERNAL	146sqm
EXTERNAL	33sqm
TOTAL	179sqm

**TYPICAL PLAN**  
Scale 1:100 @ A3



UNIT KEY - CONDOMINIUM\_C,D,E,  
F  
(LEVELS 1-3)

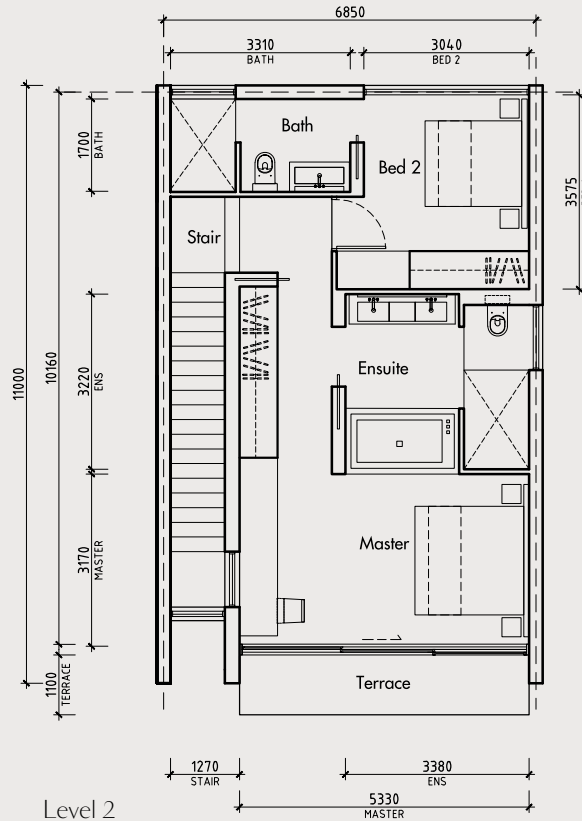
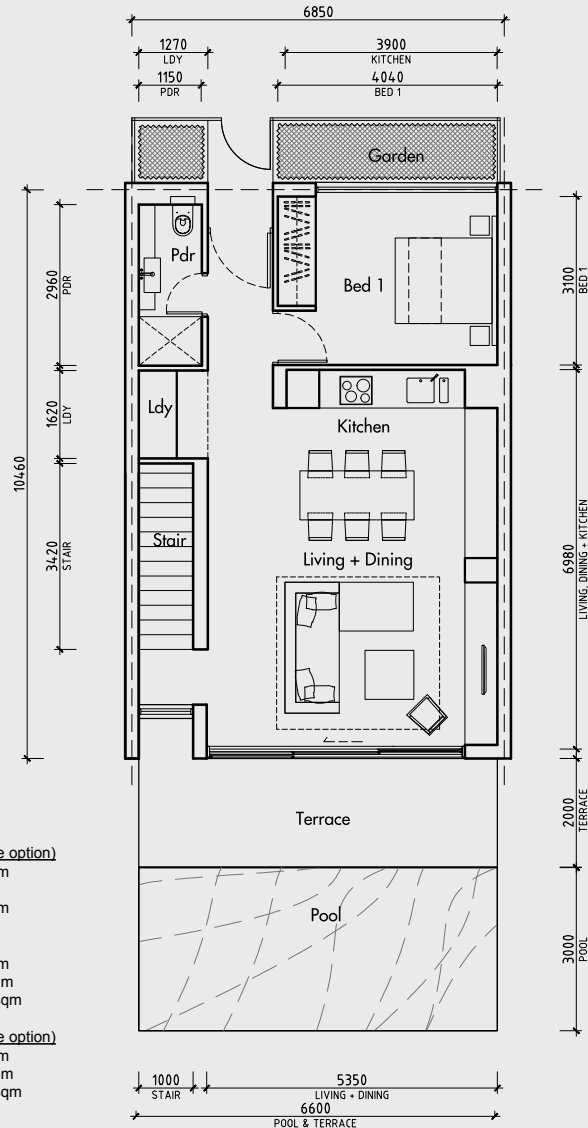


PRECINCT KEY



TYPICAL UNIT

3 BEDROOM TWO STOREY APARTMENT



Level 1

UNIT AREA:

**UNIT 124 (balcony upgrade option)**

INTERNAL	143sqm
EXTERNAL	87sqm
TOTAL	230sqm

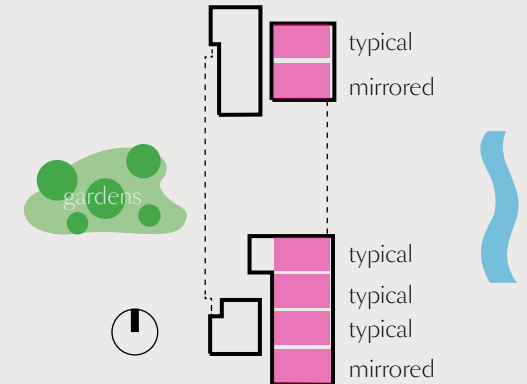
**UNIT 125-128 (typical)**

INTERNAL	143sqm
EXTERNAL	47.4sqm
TOTAL	190.4sqm

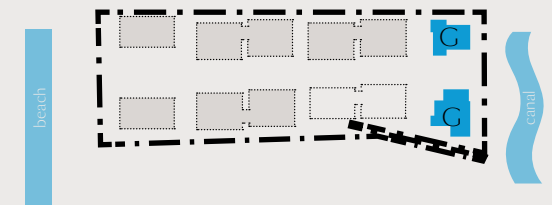
**UNIT 129 (balcony upgrade option)**

INTERNAL	143sqm
EXTERNAL	60.5sqm
TOTAL	203.5sqm

TYPICAL PLAN  
Scale 1:100 @ A3



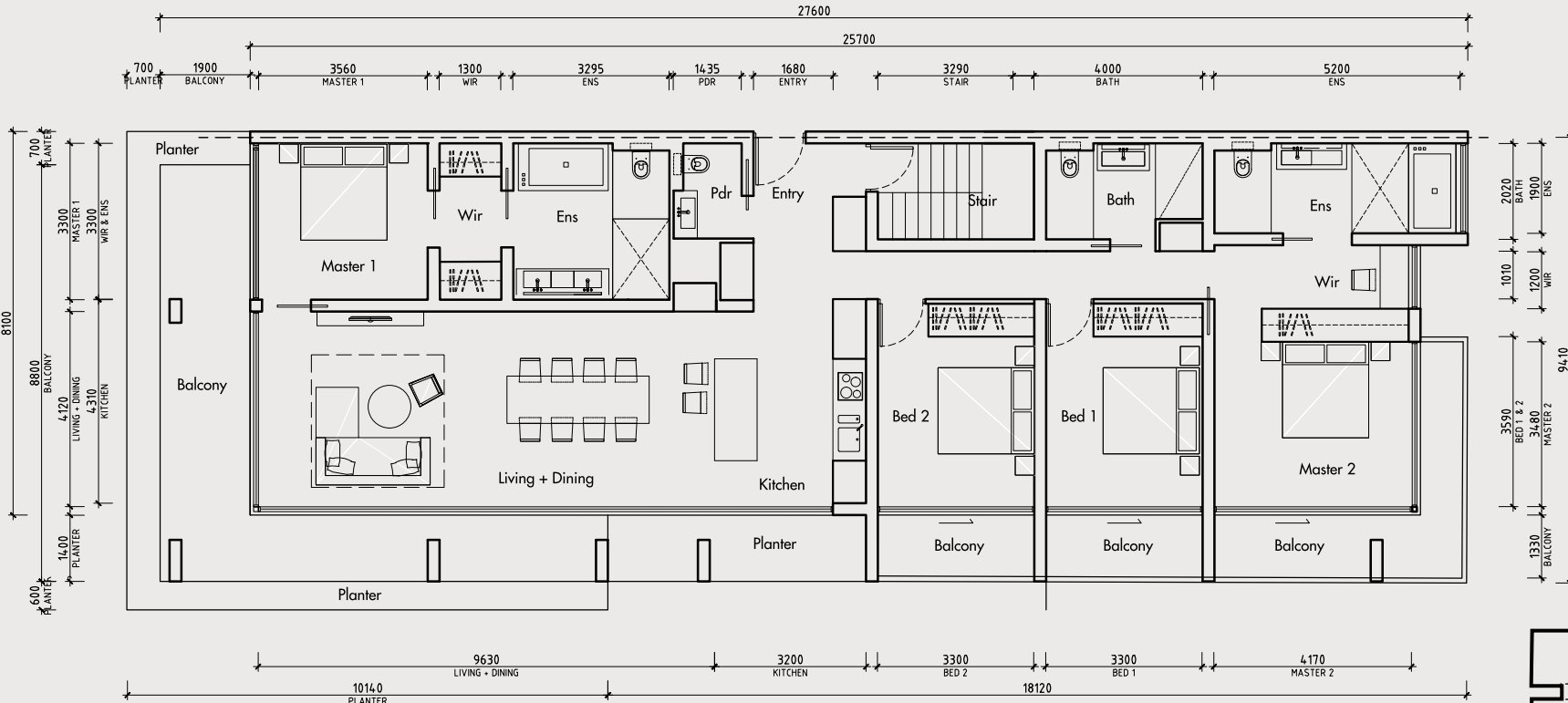
UNIT KEY - CONDOMINIUM\_G (LEVELS 1-2)



PRECINCT KEY

TYPICAL UNIT

4 BEDROOM PENTHOUSE (4BPH\_TYPE 2)

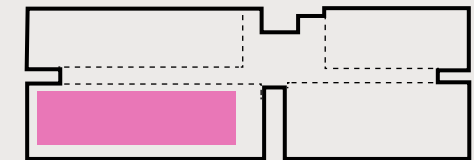


UNIT AREA:

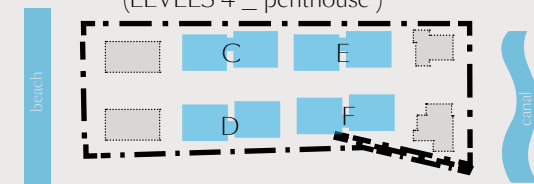
INTERNAL	199sqm
EXTERNAL	35sqm
TOTAL	234sqm



TYPICAL PLAN  
Scale 1:100 @ A3



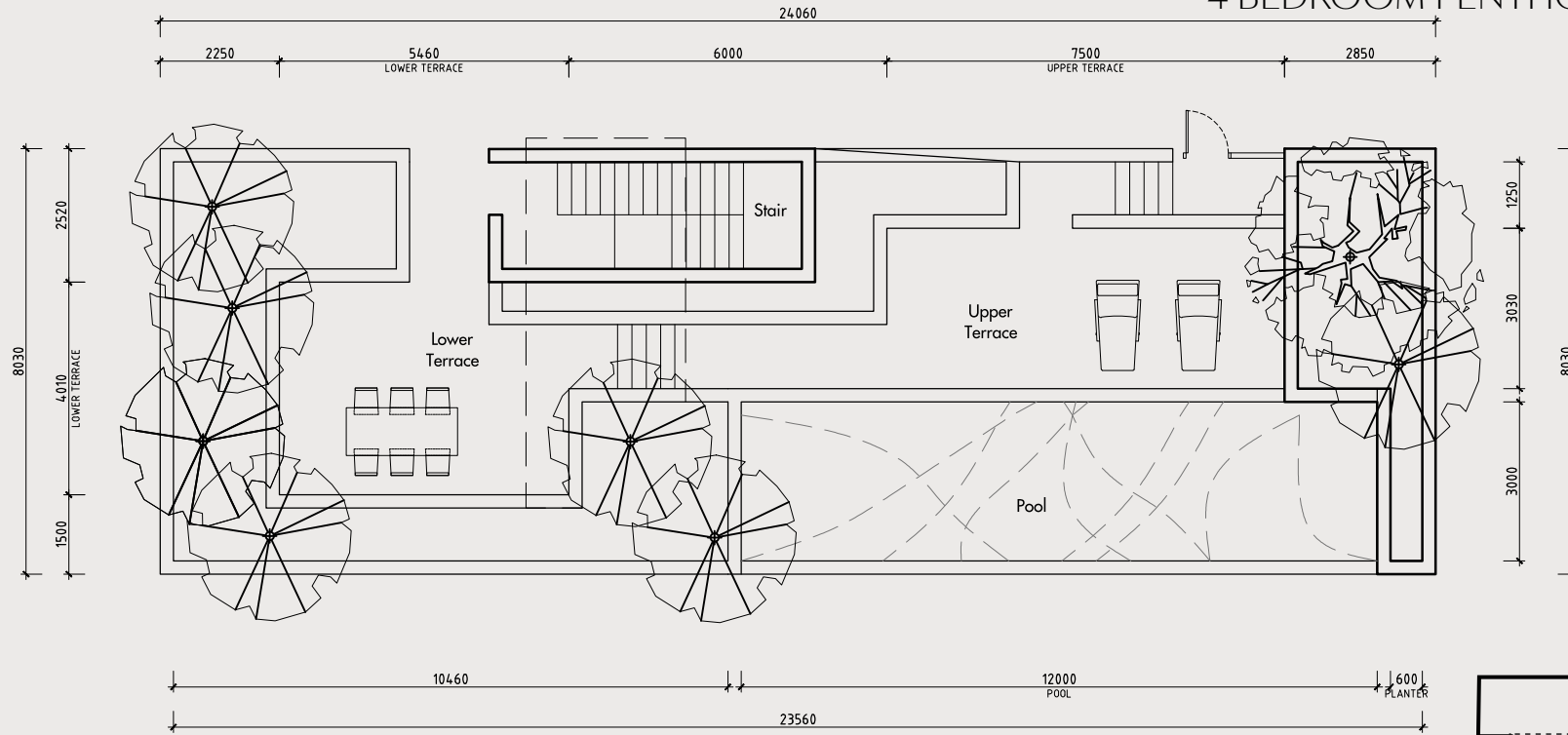
UNIT KEY - CONDOMINIUM\_C,D,E,  
F  
(LEVELS 4 \_ penthouse)



PRECINCT KEY

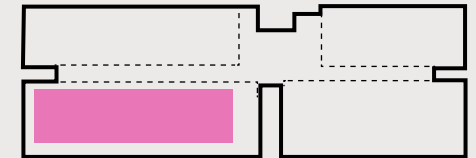
TYPICAL UNIT

4 BEDROOM PENTHOUSE (4BPH\_TYPE 2)



UNIT AREA:  
 ROOF TERRACE 192sqm

TYPICAL PLAN  
 Scale 1:100 @ A3



UNIT KEY - CONDOMINIUM\_ C,D,E,  
 F  
 (LEVELS 4 - penthouse)



PRECINCT KEY

W  
J

## Design

Design for residents and common areas in Eden Residences is done by White Jacket, a Singapore multiple award-winning design studio known for its hospitality-related expertise. Its portfolio includes Naumi Hotel, JW Marriott, Rosewood Hotel Ningbo in China and Kimpton Naranta Bali.

RECEPTION



BEDROOM



LIVING SPACE



ROOM TERRACE



# TEAM





Aleksandr Chuvalov  
CEO

Developer with more than 500,000 m<sup>2</sup> built in Russia.

Key consulting work includes more than 100 projects.

The most famous project is Reef Residence.

Reef residence – is a luxury destination of 61 residences and 2 villas located at the territory of 1.1 hectares at beachfront area near “Bocharov Ruchei” in Sochi.

RESIDENTIAL COMPLEX  
“OGNI SOCHI”



REEF RESIDENCE



REEF RESIDENCE



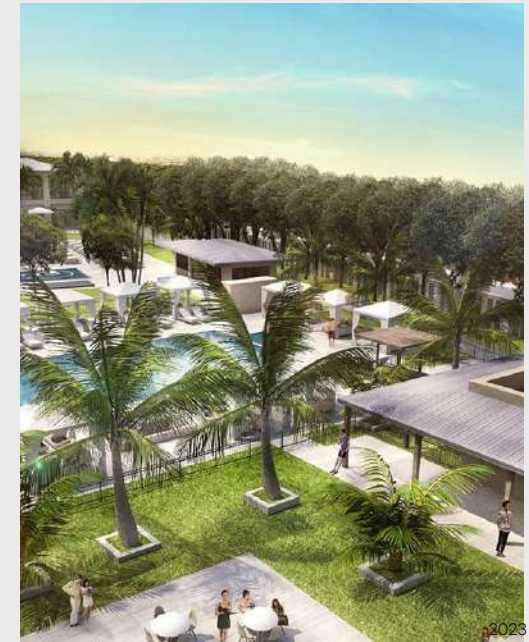


## Ravi Chandran

Corporate Affairs

His prominent positions included Executive Vice President of the Banyan Tree Group, Chief Executive Officer of Laguna Resorts & Hotels PLC and Managing Director of Laguna Phuket. He was also with the global hospitality groups of Regent and Hilton International overseeing the

Europe market. With an adaptive and people-centric approach, his strong track records are exemplified by his leadership portfolios in the award-winning Banyan Tree Holdings for 25 years.





## Martin Palleros

Architect

Founder of Tierra Design, Argentinian-born Martin brings his award-winning expertise to Eden Residences.

With an architecture degree from Argentina, a master's degree from the United States and founding different design studios in Singapore, Thailand

and Australia, Martin Palleros has extensive experience with a deep understanding of different cultural perspectives. His work focuses on providing design studio services for resorts and hotels that seek out the best in architectural aesthetics.

TWINPALMS RESORT  
PHUKET



ANANTARA  
BEACH HOUSE



TWINPALMS RESIDENCES  
MONT AZURE

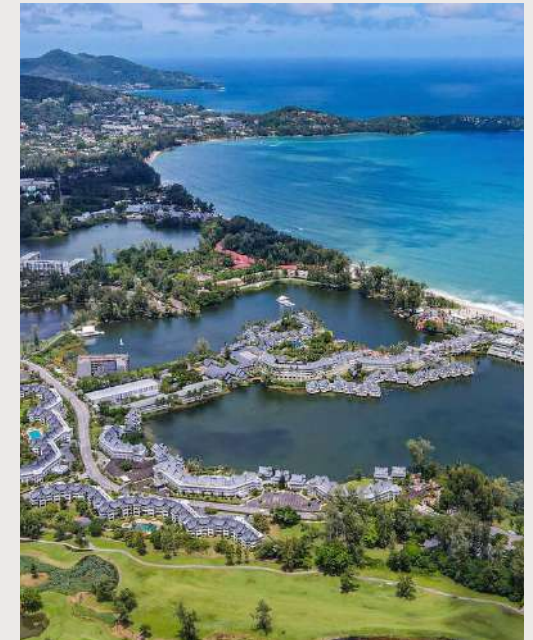




Roman Gorin  
Managing Director

The dynamic force behind Amal Development, steering it towards new heights. With a remarkable track record, including a five-year tenure as the Director of Property Rental at Laguna Phuket, a flagship asset of the esteemed Banyan

Tree Group in Thailand, Roman has demonstrated his exceptional leadership. Prior to this, he founded Siam Luxury Villas, an agency dedicated to exquisite villas in Phuket.

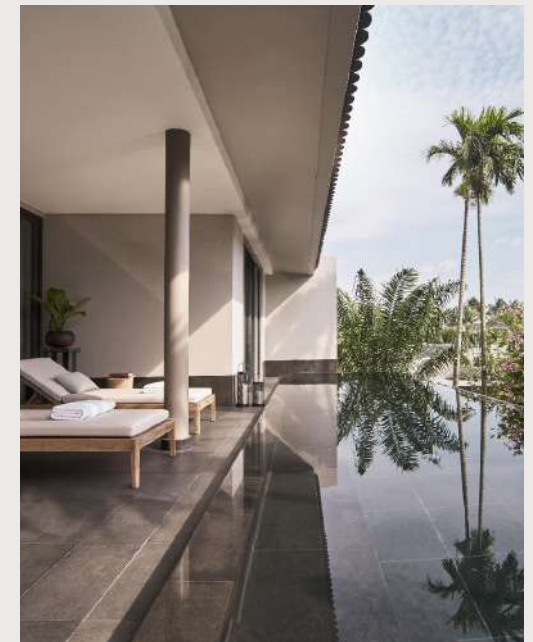




David Johnson  
Marketing Communications

CEO of Delivering Asia Communications (DAC) and former journalist, specializing in telling the stories of Asia's top luxury hotels and residences to the world. Clients include Four Seasons Private Residences, Capella, Regent, Mondrian,

Accor, Hyatt, InterContinental and Marriott in destinations such as Thailand, Vietnam, Indonesia, Singapore, and the Maldives. DAC is headquartered in Bangkok with offices across the region.





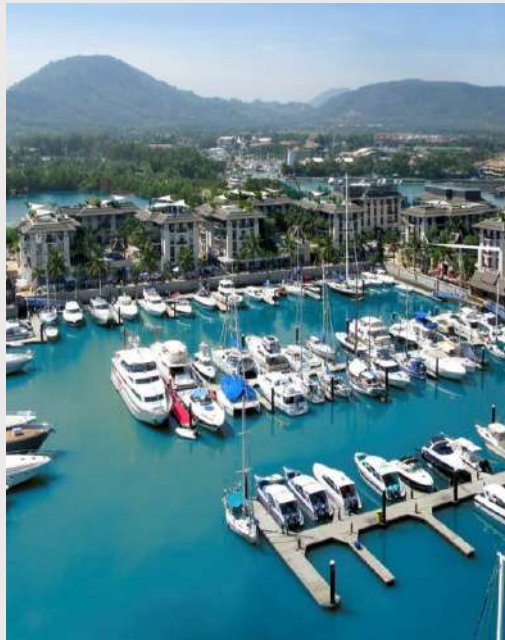
## Michael Ayling

Project Financial  
Planning and Audit

CEO of Nuobello, Michael's portfolio includes:

- As Financial and then Managing Director of Laguna Resorts and Hotels PLC, he was responsible for numerous residential developments within Laguna Phuket comprising over 400 residences

- Managing Director of Royal Phuket Marina which included the master planning and design of 2 hotels, a water park and property developments
- The founding CEO of Blue Tree Phuket encompassing the conceptualisation, design, development and opening of the mixed-use entertainment development





Thank you